

WELCOME - MARY JANE STANCHINA

"Work-based learning is what we have always done, with new language and some new requirements. "





01

INTRODUCTIONS

CTE Administrators, CTE instructors,
School Counselors & EMIS Coordinators

02

WHY WBL?

03

WBL PATHWAY OPTIONS

04

TRACKING WBL HOURS

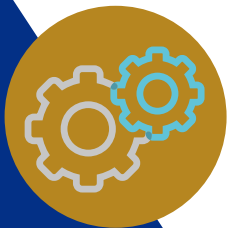
05

QUESTIONS / DISCUSSION

06

NEXT STEPS

WHY WBL?



PROVIDES CAREER EXPLORATION & PROFESSIONAL SKILL DEVELOPMENT



EXPANDS LEARNING TO "REAL WORLD" AND STRENGTHENS RELATIONSHIPS WITH BUSINESSES & INDUSTRY

NEW!



WBL HOURS ARE NOW TRACKED BY ODE & USED AS A PERFORMANCE INDICATOR





3 PERFORMANCE MEASURES

There are 3 performance measures that are aligned to Quality Program Review and the CTPD report card. They are:



TECHNICAL SKILL ATTAINMENT

Based on WebXam scores



POST-PROGRAM PLACEMENT

Follow-up report indicates students' post-secondary education or advanced training, military enlistment, employment or apprenticeship.



WORK-BASED LEARNING

measures the % of CTE concentrators that have participated in a minimum of 250 hours

WBL - PERFORMANCE INDICATOR DATA

2022 & 2023 GRADUATES

*Required to report & will appear
on QPR but will be
"held harmless"*

2024 GRADUATES

*Goal is to have 15% of
students per pathway
participate in 250 WBL hours*



WORK-BASED LEARNING PATHWAY OPTIONS

01

JOB SITE PLACEMENT AND
INTERNSHIP

02

APPRENTICESHIP AND
PRE-APPRENTISHIP

03

REMOTE OR VIRTUAL
PLACEMENT

01

ENTREPRENEURSHIP

02

SCHOOL-BASED ENTERPRISE

03

SIMULATED WORK
ENVIRONMENT

WBL ROLES & RESPONSIBILITIES

To be reviewed and signed prior to WBL experience beginning

WBL AGREEMENT

Should be in place prior to the WBL experience beginning

WBL FORMS



WBL EVALUATION

WBL should be co-evaluated by both the instructor & employer/mentor throughout the experience

WBL HOURS TRACKER (ONLINE)

Students will fill out the google form weekly to track their WBL hours

NEW!

WBL HOUR TRACKING SYSTEM



PROGRAM SPECIFIC

You will be provided a specific Google form & sheet pre-loaded with your rosters



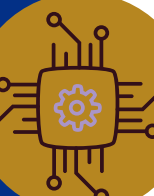
STUDENT DRIVEN

Students will fill out the Google form weekly to track their hours



TRACKS BOTH PROGRAM SPECIFIC HOURS & OTHER JOBS

Students will have the option to report both types of hours on the Google form



SHARED WITH EMIS COORDINATORS & REPORTED ANNUALLY TO ODE





NEXT STEPS



NEED MORE SUPPORT?

I will be making visits in the fall to help train teachers & students



ROSTER VERIFICATIONS

Student rosters on the Google sheets will be updated over the summer & as schedules change in early Fall



ADDITIONAL OPPORTUNITIES

Brainstorm potential new WBL opportunities for your students & talk to your colleagues to share ideas